

**HOUSE NO. 19**

Ground Floor Area 39.9sqm / 429sqft

Garage 7.93m x 3.66m

Hall 4.85m x 1.85m

WC 1.59 x 1.06

Cupboard 1.98m x 1m

First Floor Area 42.5sqm / 457sqft

Lounge 4.84m x 4.41m

Kitchen 4.51m x 2.75m

Landing 2.93m x 1.98m

Utility Space 1.98m x 1.04m

Second Floor Area 42.6sqm / 459sqft

Landing 2.94m x 1.76m

Master Suite 3.8m x 3.34m

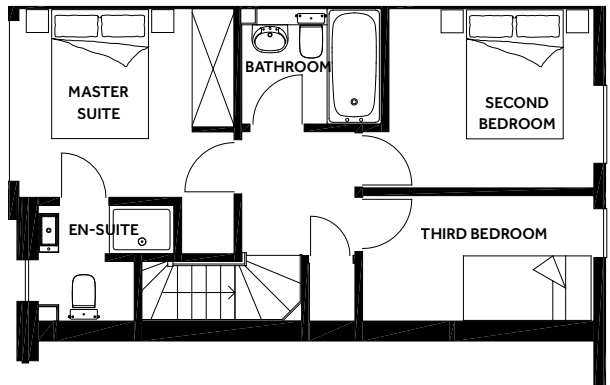
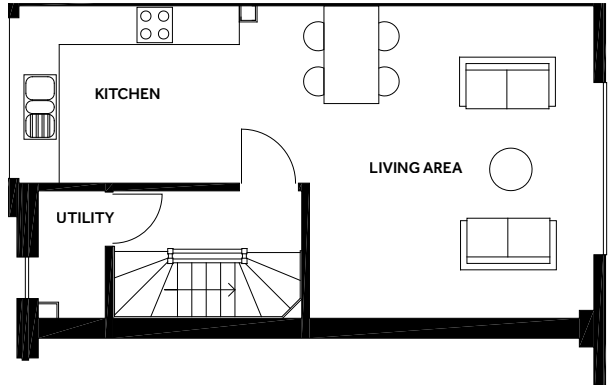
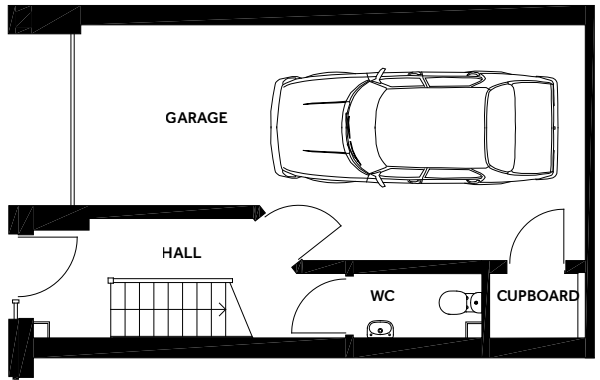
Second Bedroom 3.59m x 2.78m

Third Bedroom 3.69m x 1.95m

Bathroom 2.96m x 1.79m

En-suite 2.10m x 1.79m

Cupboard 0.9m x 0.71m



**THE  
BREAD  
FACTORY**

Please contact a member  
of our sales team:

**MILES & BARR**

ramsgate@milesandbarr.co.uk

+44 (0) 1843 570 500

thebreadfactoryramsgate.com

**MISREPRESENTATION ACT**

This brochure, the description, imagery and measurements therein do not form part of any contract and whilst every effort has been made to ensure accuracy, this cannot be guaranteed.

**HARRISS**

